

# techhose

QUALITY CONNECTIONS

Hydraulics

Pneumatics  
& Vacuum

Industrial

Compressed Air  
& Ring Main

Process &  
Instrumentation

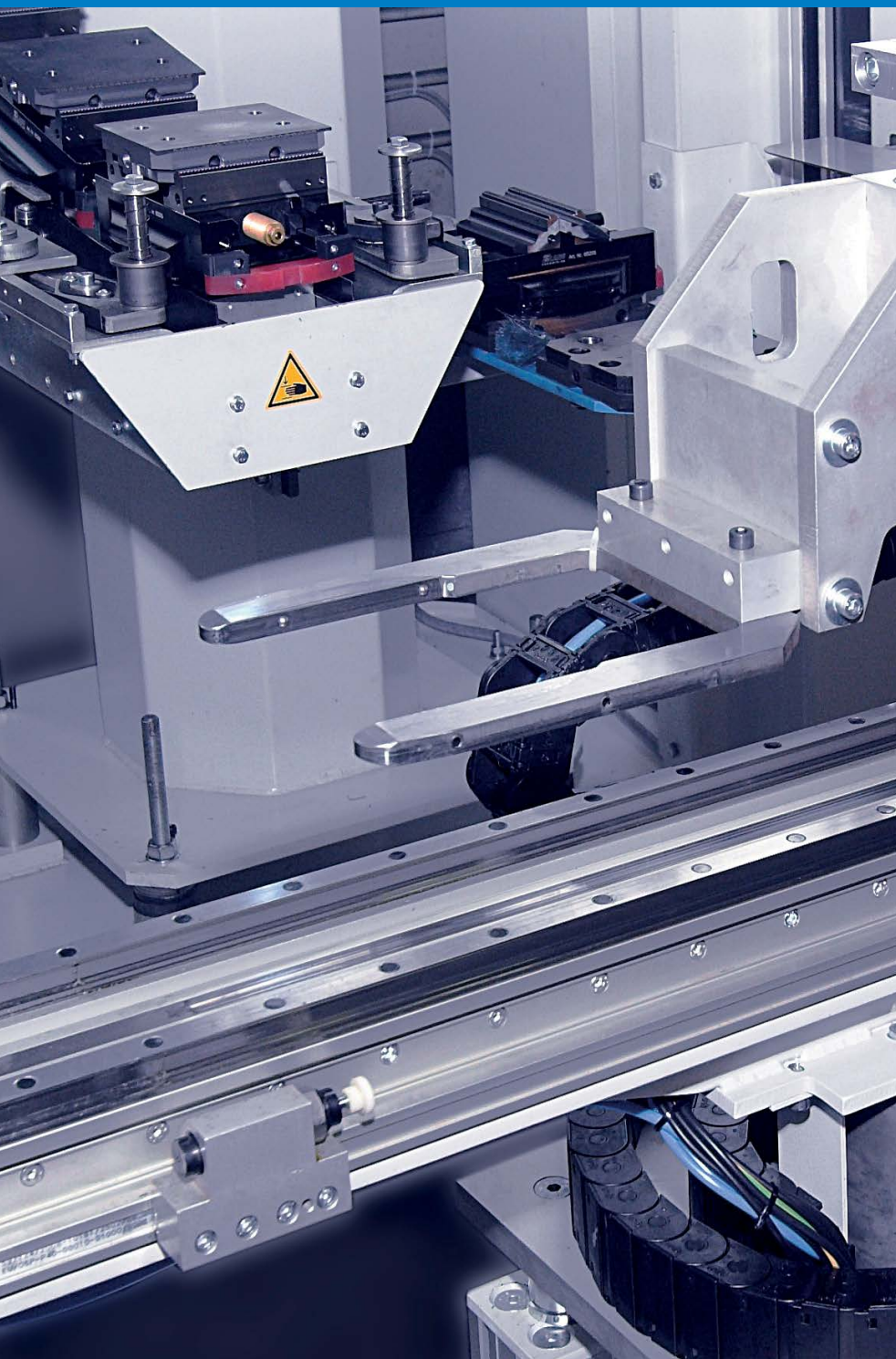
## Pneumatics

Parker

# SECTION 6



Parker



- Cylinders
- Cylinder Accessories
- Solenoid Valves
- Mechanical Valves
- Pilot Valves
- Foot Pedals
- Hand Lever Valves
- Filters
- Regulators
- Lubricators
- Accessories
- Solenoid Coils



Cylinder Mountings & Accessories	264-265
Cylinder Repair Kits	265
Filter Regulator, Lubricator Sets	272
Hand Lever Valves	269
ISO 15552 Cylinders	263
ISO Solenoid Valves ISO 1 & 2	271
Mechanical Valves	268-269
Mini ISO 6432 Cylinders	264

Namur Valves	266
Parker VDMA Cylinders	264
Pneumatic Foot Pedals	268
Poppet Valves	270
Push Button Valves	266
Solenoid Coils & Plugs	267
Solenoid Control Valves	266-267
Sub bases ISO 1 & 2	271



## Double Action Pneumatic Profile Cylinders

The P1F, in bore sizes Ø32 to 125mm, is a smooth profile linear pneumatic cylinder conforming to the ISO 15552 standard. It utilises internal composite technology (piston) to save weight, while assuring the high performance and functionality expected of an ISO cylinder. With aluminium sandblasted front and rear end covers, multi-layer PTFE-coated steel bearing with stainless steel piston rod, pneumatic cushioning and magnetic piston with polyurethane (PUR) seals as standard, this is our industrial profile ISO cylinder.

Challenges encountered within rigorous environments require leading engineered solutions and products. Meeting these exacting needs, the P1F provides the answer for high and low temperature applications. It is engineered to provide superior performance in harsh conditions, using proven class-leading seal technology for reliable operation, and long service life in temperatures down to -40°C and up to +150°C. With robust corrosion-resistant body and optional metal scraper, the P1F leads the way in today's changing climate.

- Applications:**
- Factory automation
  - Machine tools
  - Packaging machinery
  - Vehicle assembly facilities
  - Material handling
  - Outdoor
  - Transport

**Working Temperature:**  
-40°C to +80°C

**Maximum Working Pressure:**  
10 bar



### ISO 15552

0678	Bore mm	Stroke mm	Thread	Piston Rod Thread Size
P1F-S032MS-0050	32	50	1/8"	M10 x 1.25
P1F-S032MS-0080	32	80	1/8"	M10 x 1.25
P1F-S032MS-0100	32	100	1/8"	M10 x 1.25
P1F-S032MS-0125	32	125	1/8"	M10 x 1.25
P1F-S032MS-0160	32	160	1/8"	M10 x 1.25
P1F-S040MS-0050	40	50	1/4"	M12 x 1.25
P1F-S040MS-0125	40	125	1/4"	M12 x 1.25
P1F-S050MS-0080	50	80	1/4"	M16 x 1.5
P1F-S050MS-0100	50	100	1/4"	M16 x 1.5
P1F-S063MS-0100	63	100	3/8"	M16 x 1.5
P1F-S063MS-0200	63	200	3/8"	M16 x 1.5
P1F-S063MS-0500	63	500	3/8"	M16 x 1.5
P1F-S080MS-0100	80	100	3/8"	M20 x 1.5
P1F-S080MS-0200	80	200	3/8"	M20 x 1.5
P1F-S100MS-0025	100	25	1/2"	M20 x 1.5
P1F-S100MS-0200	100	200	1/2"	M20 x 1.5
P1F-S125MS-0250	125	250	1/2"	M27 x 2

Tech Sheet 68754



For Parker LF 3000 Push-in Fittings  
see **Section 8**



## Double Action Pneumatic Profile Cylinders



**Mini ISO6432 Cylinders Single Acting Spring Extend**

0678	Cyl. Bore mm	Stroke m m	Port Size
P1A-S016TS-0050	16	50	M5



**Mini ISO6432 Cylinder Piston Rod Clevis**

0678	Cylinder Dia mm
P1A-4HRC	20



**Mini ISO6432 Cylinder Swivel Rod Eye**

0678	Cylinder Dia mm
P1A-4CRS	10



**Mini ISO6432 Cylinder Foot Mounting MS3**

0678	Cylinder Dia mm
P1A-4CMF	10



**Mini ISO6432 Cylinder Rear Clevis Bracket**

0678	Cylinder Dia mm
P1A-4CMT	10



**Mini ISO6432 Cylinder Flange-MF8**

0678	Cylinder Dia mm
P1A-4CMB	10

## Parker VDMA Cylinders



**ISO6431 VDMA Cylinders**

0678	Cyl. Bore mm	Stroke mm	Port Size BSP
P1D-S032MS-0160	32	160	1/8"
P1D-S040MS-0080	40	80	1/4"
P1F-S040MS-0100	40	100	1/4"
P1D-S040MS-0160	40	160	1/4"
P1D-S063MS-0125	63	125	3/8"
P1D-S063MS-0320	63	320	3/8"
P1D-S080MS-0050	80	50	3/8"
P1F-S080MS-0160	80	160	3/8"
P1D-S080MS-0200	80	200	3/8"



**ISO6431 VDMA Piston Rod Clevis**

0678	Cylinder Dia mm
P1C-4KRC	32



**ISO6431 VDMA Rod Swivel Eye**

0678	Cylinder Dia mm
P1C-4KRS	32

## Parker VDMA Cylinders



**ISO6431 VDMA Flange MF1/MF2**

0678	Cyl. Dia mm
P1C-4KMB	32



**ISO6431 VDMA Rear Pivot Bracket with Rigid Bearing**

0678	Cyl. Dia mm
P1C-4KMD	32



**Solid State PNP Sensor & Cable**

0678	Description
P8S-GPMHX	PNP Sensor c/w 0.27m Lead
P8S-GPFLX	PNP 3 Metre Flying Lead.



**ISO6431/VDMA Foot Bracket MS1**

0678	Cylinder Dia mm
P1C-4LMF	40



**ISO6431/VDMA Clevis Bracket MP4**

0678	Cylinder Dia mm
P1C-4KME	32
P1C-4LME	40
P1C-4NME	63



**ISO6431 VDMA Cylinder Repair Kits**

0678	Description
P1D-6KRN	32mm Bore Repair Kit
P1D-6LRN	40mm Bore Repair Kit
P1D-6MRN	50mm Bore Repair Kit
P1D-6NRN	63mm Bore Repair Kit
P1D-6PRN	80mm Bore Repair Kit
P1D-6RRN	125mm Bore Repair Kit



**ISO6431/VDMA Clevis Bracket GA**

0678	Cylinder Dia mm
P1C-4KMCA	32



**ISO6431 VDMA Rear Swivel Eye Bracket**

0678	Cylinder Dia mm
P1C-4KMSA	32



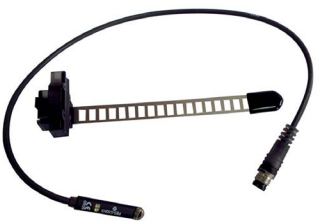
**ISO Cylinder Repair Kits**

0678	Description
32-2110AR	32mm Bore Repair Kit
40-2110AR	40mm Bore Repair Kit



**ISO6431/VDMA Clevis Bracket MP2**

0678	Cylinder Dia mm
P1C-4LMT	40
P1C-4NMT	63



**Reed Sensors & Mountings**

0678	Description
P8S-GSFLX	Reed Switch c/w 3m PVC Cable
9126344341	3m Cable with 8mm Round Connector
9126344342	10m Cable with 8mm Round Connector

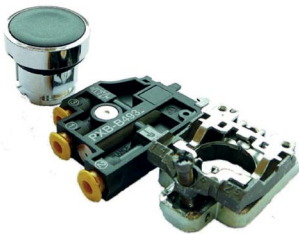
## A.Z. Namur Valves & Accessories

### 5/2 Sol - Sol Namur Interface Valve G1/4"

0678	Description	Thread Size	Working Pressure (bar)
582EE	5/2 Sol/Sol	G1/4	1-10



## Parker Mechanical Valves



### Push Button & Valve Spring Return 4mm Push-in

0678	Flow l/min	Description
PXB-B4131BA2	240	Black with 1 NC Valve



### Selector Switch & Valve 4mm Push-in

0678	Flow l/min	Description
PXB-B4131BD2	240	Black - 2 Positions - with 1 NC Valve



### Mushroom Head Push Button 4mm Push-in

0678	Flow l/min	Description
PXB-B4131BC2	240	Black - Spring Return - with 1 NC Valve



### Latching Push Button 4mm Push-in

0678	Flow l/min	Description
PXB-B4131BT4	240	Red - Latching - with 1 NC Valve

# PNEUMATIC VALVES



6



The Viking Lite valve range is robust, versatile and combines high performance with compact installation dimensions. The choice of G1/8, G14 or G3/8 port sizes provide large flow capacity and short change-over times. Low change-over pressure is also an important characteristic of this valve range.

Under pressure, radial expansion of the seal occurs to maintain sealing contact with the valve bore. This sealing method reduces friction and gives lower pilot pressures, providing fast response and less wear. Valves do not require lubrication in operation but they can also be installed in systems that are lubricated.

**Working Temperature:**  
-10°C to +50°C

**Maximum Working Pressure:**  
10 bar

## Solenoid 3/2 Way Valve



**Direct Acting, Double Solenoid, Normally Closed, BSPP**

0681	Thread
P2LAZ311EENDCN	1/8"
P2LBZ312EENDCN	1/4"

Tech Sheet 68763



**Spring Return, Single Solenoid, Normally Closed, BSPP**

0681	Thread
P2LAZ311ESNDCN	1/8"
P2LBZ312ESNDCN	1/4"

Tech Sheet 68763

## Solenoid 5/2 Way Valve



**Direct Acting, Double Solenoid, BSPP**

0681	Thread
P2LAZ511EENDCN	1/8"
P2LBZ512EENDCN	1/4"

Tech Sheet 68763



**Spring Return, Single Solenoid, BSPP**

0681	Thread
P2LAZ511ESNDCN	1/8"
P2LBZ512ESNDCN	1/4"

Tech Sheet 68763

## Solenoid 5/3 Way Valve



**Spring Return, Single Solenoid, Closed Centre, BSPP**

0681	Thread
P2LAZ611EENDCN	1/8"
P2LBZ612EENDCN	1/4"

Tech Sheet 68763

**Spring Return, Single Solenoid, Pressurised Centre, BSPP**

0681	Thread
P2LAZ711EENDCN	1/8"
P2LBZ712EENDCN	1/4"

Tech Sheet 68763

**Spring Return, Single Solenoid, Vented Centre, BSPP**

0681	Thread
P2LAZ811EENDCN	1/8"
P2LBZ812EENDCN	1/4"

Tech Sheet 68763

## Solenoid Coils & Plugs



**Solenoid Coils, 22mm**

0681	Voltage
P2FCB449	24V DC
P2FCB453	110V AC
P2FCB457	230V AC

Tech Sheet 68763



**Connector Plug, IP65**

0681
3EV10V10

Tech Sheet 68763



**Plug with LED & Protection**

0681	To Suit
3EV10V20-24	24V AC/DC
3EV10V20-110	110V AC
3EV10V20-230	230V AC

Tech Sheet 68763

Parker



PNEUMATICS

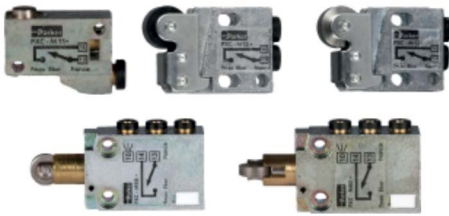


## Mechanical Valves



### Push Buttons & Valves (Separate Components)

0681	Description
PXB-B4931	Switch Valve - Flow 240 l/min NO/NC
ZB4-BC2	Mushroom Head - 40mm Spring Return - Black



### Micro Plunger & Roller Limit Valves 4mm

0681	Actuator	Return
PXC-M601A110	Steel Plunger	Spring Return
PXC-M121	Plastic Roller	Spring Return
PXC-M521	Plastic Roller	Spring Return



### B43 / B53 Lever Valves G1/8" - G1/4"

0681	Type	Actuator	Return	BSPP
B43003ES	3-2	Palm Lever	Spring Return	1/8"
B43003LS	3-2	Lock Down Lever	Spring Return	1/8"
B43004LS	5-2	Lock Down Lever	Spring Return	1/8"
B53003LT	3-2	Lever	Lever	1/4"
B53004LT	5-2	Lever	Lever	1/4"



### B43 / B53 Valves 3/2 & 5/2 Button Operated G1/8" - G1/4"

0681	Type	Actuator	Return	BSPP
B43003BXS	3-2	Button	Spring	1/8"
B43003HXS	3-2	Button	Button	1/8"
B53003HX	3-2	Button	Button	1/4"
B53004HXS	5-2	Button	Spring	1/4"
B43004HXS	5-2	Button	Button	1/8"



### B43/B53 3/2 Trip Valves G1/8" - G1/4"

0681	Type	Actuator	Return	BSPP
B43003CS	3-2	Plunger	Spring Return	1/8"
B43003RS	3-2	Roller Lever	Spring Return	1/8"
B43003RTS	3-2	One Way Roller Trip	Spring Return	1/8"



### B53 Spool Valve Panel Mounting Kit

0681	Description
M53004L-10A	B53 Series Panel Mounting Kit



B4 RANGE

B5 RANGE

### B43 / B53 Foot Pedal 3/2 & 5/2 Valves G1/8" - G1/4"

0681	Type	Actuator	Return	BSPP
B43003FS	3-2	Foot Pedal	Spring Return	1/8"
B53003FS	3-2	Foot Pedal	Spring Return	1/4"
B53004FS	3-2	Foot Pedal	Spring Return	1/4"



### Heavy-duty Lever 3/2 Poppet Valve G1/2"

0681	Actuator	Return	Thread BSPP
B203L	Lever	Lever	1/2"

## Mechanical Valves



Viking Xtreme 3/2 & 5/2 Lever Operated G1/8" G1/4" & G1/2"

0681	Type	Actuator	Return	Thread BSPP
P2LAX511VV	5-2	Lever	Lever	1/8"
P2LAX511VS	5-2	Lever	Spring	1/8"
P2LDX514VS	5-2	Lever	Spring	1/2"



Viking Xtreme Valve 5/3 Lever Operated G1/4" & G1/2"

0681	Actuator	Mid Position	Return	Thread BSPP
P2LBX61222	Lever	Closed	Lever	1/4"
P2LBX61211	Lever	Closed	Spring	1/4"
P2LBX81211	Lever	Vented	Spring	1/4"

## Pilot & Solenoid Valves



B3 Series 1/8" Valves Pilot & Solenoid

0681	Type	Actuator	Return	Voltage (if applicable)
B345000XXH	5-2	Air	Air	N/A



B3 Series Optional Manifold Bases

0681	Description
PS2948F	Manifold Base Kit 3/2



B3 Series Manifold End Plate Kits

0681	Description
PS2951F	Manifold End Plate Kit 3/2



B4 Series G1/4" Valves Pilot & Solenoid

0681	Type	Actuator	Return	Voltage (if applicable)
B4T6AXXXF	5-2	Electric	Spring Return	Less Solenoid

## Pilot &amp; Solenoid Valves



## B4 Series Optional Manifold Bases

0681	Description
PS4548F	Manifold Base Kit 3/2



## B4 Series Manifold End Plate Kits

0681	Port Size BSPP	Description
PS4516F	3/8"	Manifold End Plate Kit 5/2



## B3 &amp; B4 Series Coils 15mm

0681	Voltage
P2E-KV32B2	12V DC
P2E-KV32C2	24V DC
P2E-KV32D2	48V DC
P2E-KV31J2	230V AC 50Hz



## B3 &amp; B4 Series Solenoid Connectors / Cable Plugs

0681	Description
P8C-D	Standard IP65 without Flying Lead



## Viking Lite Valve 3/2 &amp; 5/2 Solenoid Operated G1/8" - G1/4"

0681	Type	Actuator	Return	Thread BSPP
P2LBZ312ESNDCN	3-2	Electric	Spring	1/4"
P2LBZ512EENDCN	5-2	Electric	Electric	1/4"
P2LAZ511ESNDCN	5-2	Electric	Spring	1/8"



## Viking Lite Valve 5/3 Solenoid Operated G1/8" - G1/4"

0681	Actuator	Mid Position	Return	Thread BSPP
P2LAZ611EENDCN	Electric	Closed	Electric	1/8"



## Viking Range 22 mm Coils &amp; Plugs

0681	Description
P2FCB449	24 V DC Coil 22mm
P2FCB457	230 V/50Hz 22mm
3EV10V20-24	Plug with LED & Protection 24V AC/DC



## Heavy-duty Pilot 3/2 Poppet Valve G1/2"

0681	Actuator	Return
B203P	Pilot	Spring

## Pilot & Solenoid Valves



**Viking Xtreme Valve 3/2 Pilot Operated G1/2"**

0681	Actuator	Return	Thread BSPP
P2LDX314PS	Pilot	Spring	1/2"



**Heavy-duty Solenoid 3/2 Poppet Valve 24V DC**

0681	Actuator	Return	Thread BSPP
DB223A49	Electric	Spring	1/2"



**Viking Xtreme G1/2" Valves Pilot & Solenoid 5/2**

0681	Actuator	Return	Voltage (if applicable)
P2LDX514ESNXXX	Electric	Spring Return	Less Solenoid



**Viking Xtreme Valve 5/3 Pilot Operated G1/2"**

0681	Actuator	Mid Position	Return	Thread BSPP
P2LDX614PP	Pilot	Closed	Pilot	1/2"



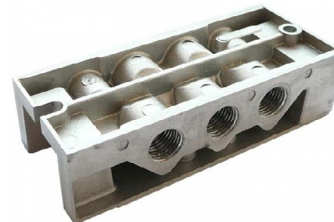
**ISOMAX Pilot Operated Valves ISO 1 & 2**

0681	ISO Size	Actuator	Return
DX1-421-60	1 - 43mm	Air Signal	Spring Return



**ISOMAX Solenoid Operated Valves ISO 1 & 2**

0681	ISO Size	Actuator	Return	Voltage (if applicable)
DX1-621-BN	1 - 43mm	Electric	Spring Return	Less Solenoid
DX2-621-BN	2 - 56mm	Electric	Spring Return	Less Solenoid
DX1-606-BN	1 - 43mm	Electric	Electric	Less Solenoid
DX2-606-BN	2 - 56mm	Electric	Electric	Less Solenoid



**Single Subbase Side & Bottom Ported - ISO 1 & 2**

0681	Ported	Port Size	ISO Size
PL1-1/4-70	Side	1/4" BSPP	1 - 43mm



**Side Ported Manifold & End Plates ISO 1 & 2**

0681	Description	Ported	Port Size	ISO Size
P2N-EM512MD	Manifold	Side	1/4" BSPP	1 - 43mm



## Filter Regulator + Lubricator

Parker's P3L Lite combination kit is a configured two-piece unit consisting of a filter regulator and mist-style lubricator.

The P3L combination kit provides accurate pressure regulation, high moisture removal efficiency, and proportional oil delivery over a wide range of air flows.

**Working Temperature:**  
0°C to +50°C

**Maximum Working Pressure:** 10 bar



### P3L Lite FRL Combination Kit

0677	Thread	Drain Type
P3LCA12PESNGLNW	1/4"	Semi-auto
Tech Sheet 68749		

## Filter Regulator



### P3L Lite Particulate Filter Regulator

0677	Thread	Drain Type
P3LEA12EPSBNNP	1/4"	Semi-auto
Tech Sheet 68749		

## Regulator

Parker's P3LR is a lightweight pressure regulator with an unbalanced poppet design, offering good response and accurate pressure regulation. For low flow and space-restricted applications, this product can provide a solution that does not sacrifice performance. The P3LR can also be mounted using a modular connector, limited to two other P3L air preparation product units. The various options available, such as pressure gauge, relieving and non-relieving, pressure range, preset pressures and tamper-proof options, make this series easy to design to your application. Flow rates up to 12.8dm³/s.



### P3L Lite Regulator

0677	Thread	Material
P3LRA12BNNP	1/4"	Polymer
P3LRX12BNNP	1/4"	Brass
Tech Sheet 68748		

## Filter

Parker's P3LF is a lightweight particulate filter that delivers high moisture removal in a compact package. The P3LF is used for the removal of solid particle contaminants down to 5 micron and the separation of bulk liquids.

This type of filter is generally used in industrial applications where liquid water, oil, and harmful dirt particles must be removed from the compressed air system.

For specific flow and space restricted applications, this product can provide a solution that does not sacrifice performance.

**Maximum Working Pressure:** 150 bar



### P3L Lite Particulate Filter

0677	Thread	Drain Type
P3LFA12EPSN	1/4"	Pulse
Tech Sheet 68750		

## Coalescing Filter

Parker's P3LF, a lightweight coalescing filter, is designed to remove liquid aerosols, water, oil and sub-micron particulate matter from your pneumatic system. These filters will provide oil-free air for several demanding applications.

The P3LF is specifically designed for the removal of solid particles, water and oil aerosols down to 0.01 micron.



### P3L Lite Coalescing Filter

0677	Thread	Drain Type
P3LFA12CPPN	1/4"	Manual
Tech Sheet 68751		

## Adsorber Filter



### P3L Lite Adsorber Filter

0677	Thread	Drain Type
P3LFA12APPN	1/4"	Manual
Tech Sheet 68752		

## Lubricator

The P3LL is a lightweight lubricator that injects a mist of oil into the flowing air stream to automatically provide the correct amount of internal lubrication for air tools and other pneumatic devices.

This type of lubricator can be precisely adjusted to a very low oil flow rate because only a portion of the oil drops seen in the sight dome travels downstream. Proportional oil is delivered over a wide range of air flows and a precision needle valve assures repeatable oil delivery. A slight adjustment can provide a desired mist rate.

This unit is ideal for low and high flow applications that demand uniform lubrication in a robust package. ISO/ASTM VG32 oil is suggested for lubrication and will allow the product to perform at peak performance. Do not use oils with additives, compounded oils containing solvents, graphite, detergents or synthetic oils.



### P3L Lite Lubricator

0677	Thread
P3LLA12LPNN	1/4"
Tech Sheet 68753	

## Accessories

### P3L Lite Accessories

0677	Description
P3LKA00MR	Neck Mounting Bracket
P3LKA00MW	Mounting Bracket for P3LFA or P3LLA
P3LKA00MP	Plastic Panel Mount Nut
P3LKA00MM	Aluminium Panel Mount Nut
P3LMA12020C	Manifold Block
P3LKA00CB1	Connector Kit, FR or R to F or L
P3LKA00CB2	Connector Kit, FR or R to M to F or L
P3LKA00CB3	Connector Kit, FR or R to F to F
P3LKA00CB4	Connector Kit, F to F or L